

# Grand River Rainbow Historical Project

[www.grandriver-rainbowhistory.ca/](http://www.grandriver-rainbowhistory.ca/)

*celebrating the lives and times of rainbow folk in Grand River country*

## *Rainbow Chorus Events (1995- )*

**Publishing History:** Documents issued at irregular intervals by the **Rainbow Chorus** for its concerts, fundraisers, and other events.

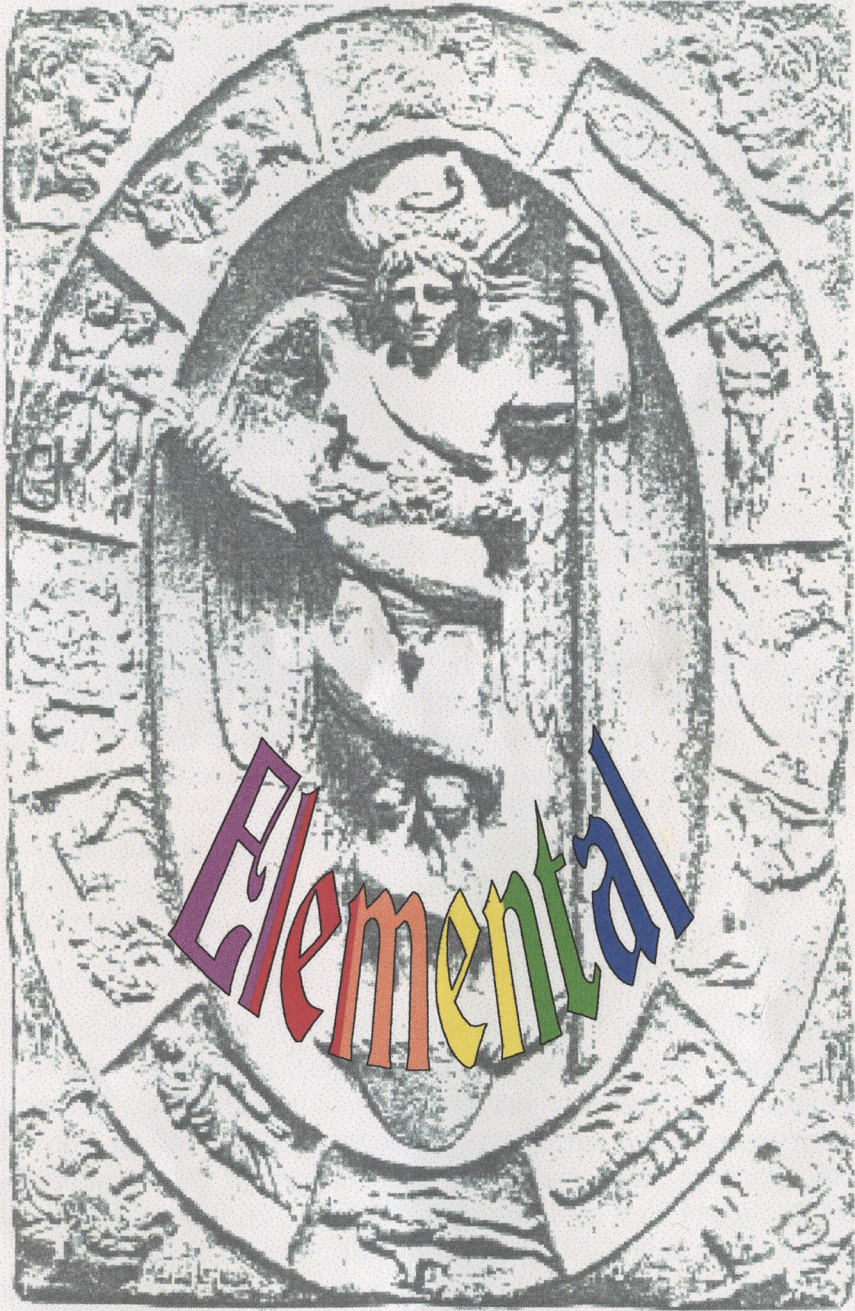
**Copyright Permission:** Copies of these documents have been reproduced with the kind permission of its copyright holder, the **Rainbow Chorus**. This permission is part of a broad agreement to grant the **Grand River Rainbow Historical Society** copyright permission to reproduce publications of **Rainbow Chorus** back to its inception in 1994.

**Digitized Files:** After the PDF file has displayed, we suggest that you **set your viewing window to a fairly large size** and then **adjust the PDF magnification** so that the text can be read comfortably.

**Telephone Numbers & Email Addresses:** These documents were published many years ago. Please do **NOT** use them as a source for telephone numbers or email addresses for local businesses or agencies. Reliable sources for that kind of information include <http://www.canada411.ca/> and other search engines on the Internet.

**Redaction:** Certain parts of the digitized text have been **blacked out** in accordance with our [Redaction Policy](#). The **Grand River Rainbow Historical Society** maintains a separate collection of unmarked (unredacted) copies of these documents for consultation as necessary.

JAN 20, 2001



Elemental

## Bob Miller

In terms of the elements, music has always been my fire or passion. As a child I had a fascination for any one who could play the piano and create music. I was determined to do the same.

It is ironic that this passion first burned brightly here in Guelph when studying music at the University. It was here that my musical journey really began. After ten years of musical involvement in Guelph, as music director for a local church, teaching, performing, and singing with the Guelph Chamber Choir, I felt the fire slowly subsiding. Time to refuel.

The next fifteen years or so, music took me many places. A larger church, a larger choir, a larger organ and eventually to another country. It was in Europe that classical music truly had meaning. The old music of the great composers fell into place there, where classical music has its roots. Classical music helps to define Europeans. We, in North America, have somewhat different roots; our musical journeys are not always the same.

In Copenhagen, Denmark I had my first choral experience with a Gay and Lesbian Choir "De Homofone". It was just one of four gay and lesbian choirs that exist in the city. This was a very positive experience, both musically and personally.

It is a privilege to be back in Guelph and direct this strong community of singers.

I hope this evening's performance stirs an elemental image within each of you.

Carol Missio-King has worked extensively as an accompanist and coach, specializing in vocal music as diverse as Music Theater and German art songs. In addition to numerous performances and recitals as an accompanist both on the West Coast and in Kitchener, she has conducted the local Gilbert and Sullivan Choir and accompanied the Rainbow Chorus. She also sings with the St. George's choir and occasionally can be heard accompanying the choir or playing the organ during the summer months.

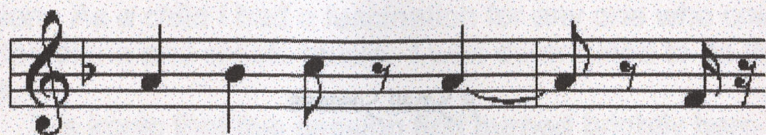
## A Small Success

We all have different definitions of success and each choir member has our own personal reasons for being involved. We also bring individual strengths and passions, which affect the chorus. This combination of people, strengths and passions has allowed Rainbow Chorus to experience many successes since our inception.

One of the most notable successes is that we exist outside a large urban centre. Balancing our budget, reaching out to local supportive businesses, obtaining Charitable status, increasing our support to the LGBT community through our monthly dances, making money on some of the dances and growing musically as a choir are all important and practical successes.

Many of the choir members have had profound and incredibly rewarding experiences with the choir over the years and these are perhaps some of our most important yet unseen successes.

Planting the seed for changed attitudes, making it easier for someone to come to terms with their sexuality and helping to strengthen the local LGBT community are "little successes" that we are all proud of.



## Bonnie J. Babin

Financial & Tax Consultant

**Proud Supporter Of  
Rainbow Chorus**

*Investment Planning Counsel*  
of Canada

Financial Planning Professionals

™

A MEMBER OF IPC FINANCIAL NETWORK INC.

Investment Planning Counsel of Canada  
IPC Investment Corp.  
Speedvale Professional Building  
317 Speedvale Ave E, Suite 4B  
Guelph, ON N1E 1N3

Tel: (519) 836-2550  
Fax: (519) 836-6949  
E-mail: [bbabin@ipcc.org](mailto:bbabin@ipcc.org)  
Web: [bonnieswealthplans.com](http://bonnieswealthplans.com)



## INVOCATION

Air I am

music: Colin Ashleigh

Text: Moira Ashleigh

Andras Corban Arther

## ELEMENTS I INTRODUCTION

Margie Johnston

AIR

David Vervoort

Blow Blow

John Rutter

Four Strong Winds

Larry Nickel

Colours of the Wind

Alan Menken

WATER

Marg Perchaluk

Bridge Over Troubled Water

Paul Simon

Soloist: Murray Jose

arr. Kirby Shaw

Away from the Roll of the Sea

Allister MacGillivray

Wood River

Willi Zwozdesky

Soloist: Mark Raymond

Aquarius

Galt MacDermot

# The Harrop Restaurant

Fine Dining  
in a gracious and comfortable  
old world country atmosphere  
(Traditional Classic Cuisine)



Open Tuesday-Sunday  
for dinner  
for lunch  
Sunday Brunch  
(closed on Mondays)

Reservations  
Appreciated  
Major Credit  
Cards  
Accepted  
Private Dining  
Available for  
Groups of 8 to  
40

Earth  
Cory Waechter

Lay down your arms  
Soloist: Kim Bolton

Doron Levinson

In Remembrance

Eleanor Daley

Somewhere

Robert Young

FIRE  
Murray Jose

Let them all come in

Brian Throekmorton

Fire, Fire my Heart

Thomas Morley

Rise UP

The Parachute Club

Soloist Lynn Brown

Special Guest Accompanist: Brad Moogach

Proudly Supporting our Community

**DR. RICK LINDAL**

PSYCHOLOGIST: PRACTICE IN CLINICAL PSYCHOLOGY

2 Carlton St  
Suite 1405  
Toronto, Ont.  
M5B 1J3  
(416) 595-0958  
Fax (416) 826-0260

the CENTER  
115 Norfolk St.  
Guelph, Ont.  
N1H 4J3  
1-800-587-0958

**TAMMY L. HARRY**



D.J. SERVICES

GUELPH, ONTARIO  
(519) 767-8572

**ROYAL CITY REALTY LIMITED**

25 Waterloo Ave., Guelph, Ontario N1H 3H4  
Office (519) 824-9050 Fax (519) 824-5183  
Direct Line (519) 824-9950 ext. 218  
E-mail: bdouglas@royalcity.com



Sales Representative  
**Brad F. Douglas**



**Woolwich  
Neuromuscular Therapy**

**Craig S. Gordon**  
Registered Massage Therapist  
By Appointment: 519-826-9832

26 Brockville Ave. - Guelph, On. - N1E 5X6

Proudly Supporting our Community

**John & Linda Rooyakkers**

380 Bl. Andrew St. West  
Fergus, Ontario N1M 1N9

Phone: (519) 787-1882  
Fax: (519) 787-4668



DEALER

**B-J ELECTRONICS**

CD's, Tapes

Electronic Repairs



**KORTRIGHT**  
ANIMAL HOSPITAL

**DR. JANE BURGESS**  
B.Sc., D.V.M.

(519) 824-7190

160 KORTRIGHT ROAD WEST, HARTSLAND PLAZA  
GUELPH, ONTARIO N1G 4W2 FAX (519) 824-8364



**Automotive Inc.**

Automotive  
Service

Import and Domestic  
Cars and Trucks

398 Crawley Road  
Guelph, Ont. N1L 1G5

**Grant Clarkson**  
phone #822-2818

**VALENTINI**  
HAIR DESIGN

837-2212  
19 QUEBEC ST., GUELPH, ONTARIO N1H 2T1

Choir Members

Soprano

Kim Bolton  
Janice Canning  
Sue Gadbois

Birgit Niggelbaum-Purvis  
Catherine Seherer

Alto

Margie Johnson  
Diane Kilby  
Colleen Liehti

Marg Peraluk  
Sylvie Plamondon  
Ruth Ann Ramsey  
Jan Robertson  
Cory Waechter

Tenor

Jan Baker  
Lynn Brown  
Jan Johnston  
Dave Veervoort

Bass

Riek Beutler  
Robert Bojeczko  
Murray Jose  
Mark Raymond  
Leslie Smith

Rainbow Chorus rehearses each Wednesday  
at 7:30 P/M at the Unitarian Church on York  
Road in Guelph.

All are welcome to come and join us.

We also host monthly dances on the second  
Friday of each month at 611 Silvercreek  
parkway north in Guelph.

For more information about  
Rainbow Chorus visit our WEB  
site

<http://www.members.home.com/rainbow.chorus>

## Thank You!

Tonight's performance marks Rainbow Chorus' 6<sup>th</sup> anniversary. This past year has been a busy one, and our success as a small community ensemble is a reflection of you our audience.